

SUPPLEMENTAL MATERIAL

Table S1. Results from screening of 226 Andean lines from the Andean Diversity Panel against eight race of *Colletotrichum lindemuthianum*

Variety		Anthracnose Race							
ID	Genotype	7	39	55	65	73	109	2047	3481
ADP0001	ROZIKOKO	1.8	4.7	5.0	0.0	0.2	3.8	5.0	0.0
ADP0002	W616444	1.0	5.0	5.0	0.0	0.2	3.5	5.0	0.3
ADP0003	KIDUNGU	5.0	5.0	5.0	0.0	0.4	1.0	5.0	0.5
ADP0004	KILOMBERO	1.5	5.0	4.5	h	1.0	2.5	5.0	1.0
ADP0005	KABUKU	5.0	5.0	5.0	0.0	0.2	0.0	5.0	2.0
ADP0006	W616465	4.7	5.0	5.0	3.2	4.3	5.0	5.0	4.8
ADP0007	BUKOB	0.2	0.2	1.0	1.0	2.0	1.0	5.0	2.4
ADP0008	Nyayo	3.0	4.5	4.8	0.4	1.3	0.4	h	0.3
ADP0010	CANADA	1.0	5.0	5.0	4.6	2.7	3.0	5.0	1.5
ADP0011	KIBOROLONI	4.7	5.0	5.0	0.0	0.0	0.0	5.0	1.0
ADP0012	W616489	4.7	5.0	5.0	4.5	4.5	4.8	5.0	4.2
ADP0013	KIBUMBULA	h	5.0	5.0	h	0.5	1.3	5.0	0.5
ADP0014	KIANGWE	1.0	3.7	3.0	4.4	2.2	3.0	5.0	1.0
ADP0015	W616495	5.0	4.8	5.0	4.4	h	h	5.0	5.0
ADP0016	GOLOLI	4.7	4.2	4.0	0.0	0.8	0.0	5.0	0.3
ADP0017	W616529	5.0	4.8	5.0	h	h	5.0	5.0	5.0
ADP0018	SODAN	5.0	4.7	5.0	4.8	4.8	5.0	5.0	5.0
ADP0019	KASUKANYWELE	0.5	4.3	5.0	4.2	1.7	1.0	5.0	1.5
ADP0020	KIGOMA	5.0	5.0	5.0	0.0	0.0	1.0	4.7	1.3
ADP0021	MBULAMTWE	5.0	4.3	4.7	0.0	1.0	1.0	4.7	1.5
ADP0022	KISAPURI	3.5	4.0	5.0	0.0	0.4	h	5.0	1.4
ADP0023	MSHORONYLONI	h	3.3	5.0	5.0	4.2	1.8	5.0	1.5
ADP0024	YELLOW	2.0	3.0	5.0	h	2.0	3.5	4.8	2.0
ADP0025	RUHONDELA	4.0	2.6	5.0	0.0	0.5	0.0	5.0	1.0
ADP0026	Black Wonder	2.6	2.2	5.0	4.2	2.6	1.0	4.5	1.2
ADP0028	Sisi	2.7	1.8	1.2	4.5	0.7	0.0	5.0	2.0
ADP0029	RHNo.2	3.0	4.7	4.3	4.0	2.2	h	4.5	1.7
ADP0030	RHNo.6	0.3	1.0	2.0	0.2	1.0	5.0	5.0	0.3
ADP0031	RHNo.11	1.4	5.0	4.8	4.6	h	3.3	5.0	4.7
ADP0032	RHNo.21	3.0	1.5	1.7	3.8	4.3	4.3	5.0	4.5
ADP0033	KIJIVU	1.3	5.0	5.0	0.2	0.2	1.8	5.0	0.3
ADP0034	KIJIVU	1.7	4.2	5.0	0.7	0.0	3.0	5.0	0.0
ADP0038	Moono	2.0	4.7	5.0	4.0	3.7	3.0	4.7	2.0
ADP0039	RoziKoko	1.8	4.7	4.7	0.5	0.2	4.0	5.0	0.2
ADP0041	MRONDO	1.3	3.8	1.7	3.2	1.0	1.0	5.0	0.4
ADP0042	MKOKOLA	1.3	3.4	1.8	3.0	1.0	1.0	5.0	0.8
ADP0044	KIJIVU	4.7	4.3	5.0	3.6	5.0	5.0	5.0	3.5
ADP0045	RHNo.12	1.0	2.3	5.0	4.2	3.6	4.0	3.8	2.5
ADP0047	MSOLINI	1.5	4.8	5.0	4.2	3.0	4.0	5.0	1.2

ADP0051	RHNo.3	1.0	4.3	5.0	4.0	4.0	4.7	4.5	3.2
ADP0055	KABUKU	5.0	4.5	5.0	2.2	3.7	3.3	2.3	3.0
ADP0057	KIJIVU	4.5	4.8	5.0	3.6	h	0.0	5.0	2.2
ADP0061	Maulasi	0.3	4.2	5.0	0.0	0.5	5.0	5.0	1.0
ADP0064	W616500	3.5	4.0	5.0	h	h	h	4.8	1.8
ADP0066	NJANO	5.0	3.5	4.6	1.2	1.0	1.0	3.6	2.0
ADP0071	NJANO-DOLEA	1.0	3.0	3.3	1.0	0.7	3.5	5.0	0.2
ADP0072	MASUSU	5.0	3.5	4.8	4.2	4.0	h	4.2	3.0
ADP0073	MASUSU	1.4	5.0	5.0	4.3	3.2	4.0	5.0	1.0
ADP0080	KABLANKETI	1.0	2.5	3.8	h	0.4	1.2	4.3	3.8
ADP0081	KABLANKETI	1.4	4.2	4.7	5.0	3.8	5.0	3.7	3.5
ADP0089	KABLANKETI	0.0	4.4	4.5	4.8	3.5	5.0	3.8	3.2
ADP0090	KASUKANYWELE	1.3	4.7	5.0	h	1.5	1.0	5.0	0.3
ADP0092	MORO	h	4.8	4.8	h	4.8	4.0	4.8	3.0
ADP0094	LUSHALA	1.0	4.5	4.8	4.8	4.5	4.0	4.7	1.3
ADP0096	Rojo	4.5	0.3	1.0	4.0	5.0	5.0	5.0	4.0
ADP0098	Selian97	5.0	3.6	2.0	1.2	3.8	1.0	2.5	4.0
ADP0099	BWANASHAMBA	5.0	5.0	5.0	4.7	5.0	5.0	5.0	4.5
ADP0100	EG21	1.3	5.0	4.3	0.3	0.7	5.0	5.0	0.0
ADP0102	Jesca	1.7	4.7	5.0	1.0	0.7	3.7	5.0	1.5
ADP0103	Pesa	h	4.8	4.5	1.2	h	3.6	4.8	1.8
ADP0104	Wiamwngu	5.0	1.5	2.0	0.5	1.0	5.0	5.0	1.0
ADP0105	Sewani97	4.5	3.5	3.6	0.3	3.0	1.0	3.7	3.7
ADP0106	Zawadi	0.6	2.4	3.3	0.0	0.0	5.0	5.0	1.4
ADP0107	Mishindi	0.2	3.5	4.7	0.0	0.3	5.0	5.0	0.0
ADP0108	Njano	5.0	4.4	4.6	0.0	1.7	1.7	4.6	0.4
ADP0109	Kablanketi	0.3	4.2	3.7	3.8	4.3	3.4	4.8	2.8
ADP0110	SUG-131	5.0	4.4	5.0	0.0	0.0	0.5	5.0	0.0
ADP0111	Uyole98	2.2	0.0	1.6	1.2	1.2	1.0	2.0	0.0
ADP0112	Uyole96	1.0	2.0	1.2	0.2	0.3	3.0	3.0	0.0
ADP0113	OPS-RS4	5.0	1.5	1.4	0.4	0.5	1.0	3.6	1.0
ADP0114	OPS-RS1	5.0	2.0	2.0	0.3	0.5	1.0	5.0	2.0
ADP0116	A-800	0.5	0.7	1.8	1.5	0.6	0.0	5.0	4.2
ADP0117	A483	4.8	2.8	1.2	0.0	0.0	1.0	5.0	1.0
ADP0118	Werna	5.0	3.0	2.0	0.0	0.0	1.0	3.6	0.5
ADP0119	A193	5.0	4.3	4.3	0.0	0.0	0.0	1.7	0.0
ADP0121	KranskopHR-1	5.0	1.0	1.0	0.2	1.0	0.0	4.8	0.3
ADP0123	Jenny	5.0	2.0	2.0	0.6	1.0	1.0	5.0	0.5
ADP0124	Pesa	5.0	4.2	2.0	2.0	4.5	4.0	4.8	4.2
ADP0186	Kisola	1.0	5.0	4.0	0.5	0.2	0.0	5.0	5.0
ADP0188	G1375	1.2	5.0	3.2	0.3	0.3	4.0	5.0	0.3
ADP0205	Diacol Calima, Lyamungu 90	4.0	4.3	5.0	0.2	0.2	0.0	2.3	0.0

ADP0206	Perry Marrow	1.8	5.0	5.0	0.0	0.7	5.0	4.6	0.5
ADP0207	Boca De Angel	2.0	5.0	5.0	0.0	0.0	4.0	4.8	0.0
ADP0208	Limoncillo	1.7	5.0	4.2	0.2	0.0	2.3	3.0	0.0
ADP0211	G 4780	2.8	1.0	4.7	0.0	0.0	0.0	1.2	0.4
ADP0212	Gordinho	3.0	5.0	5.0	0.0	0.2	1.0	3.0	5.0
ADP0213	Manteigao, Roxo Gigante	5.0	5.0	4.8	0.0	0.0	1.2	5.0	4.3
ADP0214	Manteigao Preto	4.2	4.5	3.7	0.0	0.0	0.0	4.8	1.0
ADP0220	G5625	4.2	4.3	4.8	0.0	0.3	5.0	5.0	0.5
ADP0224	Yellow Eye	3.7	3.7	3.0	0.7	0.4	5.0	5.0	1.5
ADP0225	Mecosta 003	3.5	1.8	0.5	0.7	1.0	4.5	5.0	1.0
ADP0232	G 7930	1.0	4.4	2.0	0.2	0.0	3.5	5.0	1.2
ADP0242	Tailor Horticultural	4.8	3.7	4.5	4.4	4.7	4.7	5.0	5.0
ADP0269	Horoz Fasulyesi	5.0	2.5	4.0	0.0	0.7	5.0	5.0	0.7
ADP0277	G13778	1.0	4.5	5.0	0.0	0.3	3.0	4.8	1.5
ADP0280	G14440	5.0	5.0	5.0	4.7	5.0	4.7	5.0	5.0
ADP0303	G17913	1.0	4.4	4.8	0.0	0.5	3.0	5.0	1.0
ADP0310	Frutilla Canete Georgia	5.0	5.0	5.0	0.2	0.3	h	5.0	h
ADP0351	1025/1983	5.0	4.8	5.0	5.0	5.0	5.0	5.0	5.0
ADP0353	Masusu	1.0	5.0	5.0	4.7	3.8	3.6	5.0	1.0
ADP0354	G22502	4.3	2.5	5.0	0.3	0.6	1.0	2.0	1.0
ADP0366	Line 235	1.0	4.7	5.0	1.0	0.2	2.0	5.0	0.7
ADP0368	Line 258	0.6	4.5	3.3	0.4	0.0	1.0	4.8	1.0
ADP0376	PI189408	2.2	4.6	5.0	0.3	0.2	1.5	4.4	0.5
ADP0390	PI307808	5.0	4.7	5.0	0.2	0.0	0.0	4.3	0.2
ADP0391	PI308894	5.0	3.0	5.0	0.0	0.0	0.0	3.7	0.0
ADP0392	PI309701	4.8	1.6	5.0	h	h	4.0	4.0	h
ADP0395	PI310511	4.0	0.6	5.0	0.0	0.5	0.0	2.2	0.3
ADP0417	PI451906	1.2	1.6	5.0	4.8	4.7	3.5	5.0	0.6
ADP0427	Badillo	4.0	0.0	1.0	2.6	5.0	4.4	4.8	5.0
ADP0428	Colorado del Pais	4.0	0.0	1.3	h	h	0.0	5.0	5.0
ADP0429	PR9920-171	5.0	4.0	5.0	4.8	5.0	0.0	4.5	4.3
ADP0430	PR1013-3	5.0	2.2	2.7	4.6	5.0	5.0	4.6	4.5
ADP0431	Gurabo5	1.2	3.0	1.3	5.0	5.0	5.0	5.0	4.8
ADP0432	PR0637-134	3.6	1.0	1.0	0.3	0.5	1.0	1.3	1.0
ADP0433	PR9745-232	5.0	2.0	1.0	3.8	5.0	5.0	5.0	5.0
ADP0435	RM-05-07	5.0	2.5	2.0	1.0	1.0	1.0	1.5	2.5
ADP0437	PC-50	1.8	5.0	5.0	1.0	1.0	5.0	5.0	0.8
ADP0438	46-1	0.5	4.7	1.5	5.0	4.3	5.0	5.0	1.0
ADP0442	LargaComercial	1.3	4.8	5.0	0.0	0.2	3.2	4.2	0.0
ADP0450	INIAP422	5.0	4.8	2.0	1.0	1.3	1.0	4.2	5.0
ADP0459	PI331356-C	5.0	5.0	5.0	0.0	0.2	1.0	4.7	0.0

ADP0460	PI331356-B	1.7	5.0	5.0	0.3	0.5	4.0	5.0	0.8
ADP0463	PI353534-A	2.0	0.7	1.4	0.0	0.4	2.6	4.7	0.3
ADP0466	PI449430	1.2	4.8	4.7	0.4	0.2	2.0	4.7	0.0
ADP0467	PI209808	1.3	4.0	5.0	1.0	0.0	3.5	4.8	0.3
ADP0468	N/A	1.2	4.7	5.0	0.5	0.4	3.0	4.7	0.2
ADP0469	PI527521	2.0	h	5.0	0.5	1.0	5.0	4.8	0.0
ADP0470	PI527508	h	4.2	5.0	h	5.0	4.7	4.8	4.5
ADP0474	PI527519	0.7	5.0	5.0	1.0	0.7	2.4	4.7	0.0
ADP0475	PI319706	h	4.8	4.8	3.0	3.0	3.0	4.7	1.2
ADP0476	Hutterite	4.8	4.7	1.2	4.0	5.0	5.0	4.5	2.6
ADP0477	PI527512	4.8	3.8	5.0	1.3	0.4	1.8	3.6	0.3
ADP0479	PI527530	2.7	1.5	1.7	4.8	1.0	1.0	5.0	1.6
ADP0480	PI209804	1.2	5.0	5.0	0.0	0.0	4.0	5.0	0.0
ADP0481	PI449428	3.0	4.8	5.0	0.0	0.3	4.0	5.0	1.2
ADP0482	PI209802	1.7	5.0	5.0	0.0	0.5	3.3	5.0	0.2
ADP0483	PI209815	5.0	4.8	5.0	0.0	h	4.7	4.0	h
ADP0509	Fernando	1.4	4.5	4.5	2.8	3.0	1.7	4.2	2.0
ADP0512	Ervilha	h	4.7	4.0	h	2.8	0.6	5.0	5.0
ADP0518	Mantegablanca, Kibala	0.0	4.0	4.5	3.8	4.5	2.0	5.0	1.2
ADP0519	Katarina,Cela	0.0	5.0	4.5	0.6	0.4	0.0	4.7	1.4
ADP0520	Chumbo,Cela	0.3	4.7	5.0	h	h	5.0	5.0	5.0
ADP0522	Amarelo,Cela	0.5	1.0	1.7	1.5	4.2	3.3	3.0	2.0
ADP0523	Canario,Cela	0.2	5.0	5.0	0.8	0.3	0.0	5.0	5.0
ADP0598	Charlevoix	2.0	5.0	5.0	0.2	0.2	4.2	5.0	0.3
ADP0599	Isles	0.0	0.0	1.4	0.4	0.0	2.0	5.0	1.8
ADP0600	K07921	5.0	0.6	1.0	1.5	0.0	4.5	5.0	1.0
ADP0601	Camelot	4.6	1.7	1.0	0.3	0.0	5.0	4.8	0.0
ADP0602	Sacramento	5.0	3.3	h	1.0	1.0	4.0	5.0	1.4
ADP0603	Wallace773-V98	5.0	1.6	1.5	5.0	5.0	5.0	5.0	5.0
ADP0604	1062-V98	5.0	2.0	2.0	0.5	0.6	5.0	5.0	0.0
ADP0605	1132-V96	5.0	0.0	1.0	h	h	4.0	4.8	4.8
ADP0606	NY104	4.3	1.5	1.0	0.5	0.0	3.7	4.5	0.5
ADP0607	NY105	4.0	1.5	1.5	0.2	0.0	4.0	5.0	0.4
ADP0608	UI-51	5.0	0.0	2.0	5.0	5.0	5.0	4.8	5.0
ADP0609	K-407	5.0	0.7	1.5	0.5	1.0	0.0	5.0	0.3
ADP0610	G-122	5.0	5.0	5.0	0.0	0.0	0.0	5.0	0.2
ADP0611	PompadourB	1.2	5.0	5.0	4.7	5.0	5.0	5.0	1.7
ADP0612	ICAQuimbaya	2.8	5.0	5.0	1.0	0.3	3.5	5.0	0.8
ADP0613	02-385-14	1.0	1.6	1.5	1.0	0.5	4.5	4.6	0.3
ADP0614	ND061106	4.2	1.4	2.0	0.0	0.2	5.0	5.0	0.2
ADP0615	Litekid	1.2	4.8	5.0	1.0	0.3	5.0	5.0	0.2
ADP0616	OACLyrick	4.8	1.8	1.6	1.0	1.0	4.5	4.8	0.2

ADP0617	RedRider	5.0	4.2	5.0	h	h	5.0	5.0	5.0
ADP0618	ACElk	4.2	2.3	0.8	1.2	0.3	4.3	4.5	0.0
ADP0619	UCD0906	4.8	1.0	1.2	3.5	5.0	5.0	5.0	4.7
ADP0620	UCD0405	4.6	4.5	5.0	4.0	4.3	5.0	5.0	4.7
ADP0621	JaloEEP558	4.6	5.0	5.0	0.3	0.2	0.0	5.0	1.0
ADP0622	UCD0701	5.0	1.7	1.5	3.2	5.0	5.0	5.0	4.8
ADP0623	Drake	1.2	1.3	2.0	0.2	0.2	5.0	5.0	0.7
ADP0624	Dolly	5.0	2.0	1.8	0.0	0.2	5.0	4.8	0.5
ADP0625	Micran	4.8	4.0	5.0	0.0	0.0	5.0	4.0	0.5
ADP0627	H9659-21-1	1.0	4.3	5.0	3.0	4.4	3.0	5.0	0.3
ADP0628	H9659-27-7	1.5	0.3	1.3	0.0	0.3	3.0	5.0	0.2
ADP0629	H9659-27-10	1.2	1.7	1.5	3.5	3.4	2.6	5.0	0.0
ADP0630	H9659-23-1	1.0	h	5.0	5.0	4.4	3.7	5.0	0.3
ADP0631	OAC Inferno	1.5	1.5	1.0	0.0	0.3	4.7	5.0	0.0
ADP0632	TARSHT1	5.0	1.0	1.0	4.7	5.0	5.0	4.8	4.2
ADP0633	TARS-HT2	5.0	5.0	5.0	4.5	5.0	5.0	4.8	4.7
ADP0634	UC Red Kidney	5.0	5.0	5.0	0.0	0.2	4.0	5.0	1.3
ADP0635	OAC Redstar	1.7	2.0	2.0	0.0	0.4	5.0	5.0	0.2
ADP0636	Montcalm	4.2	2.0	1.8	0.0	0.2	5.0	5.0	0.2
ADP0637	Isabella	5.0	2.3	2.0	3.0	3.0	4.0	4.8	4.3
ADP0638	Red Hawk	1.3	0.5	1.5	0.0	1.3	3.3	5.0	0.7
ADP0639	Chinook2000	0.3	0.3	1.0	0.0	1.2	5.0	5.0	0.2
ADP0640	Beluga	5.0	2.0	1.0	0.4	0.5	4.3	4.7	0.2
ADP0642	Taylor Hort.	5.0	0.0	2.0	4.5	5.0	5.0	4.8	5.0
ADP0643	Cardinal	5.0	2.0	0.6	4.0	5.0	5.0	5.0	4.7
ADP0644	Fox Fire	5.0	2.0	1.5	4.3	5.0	5.0	5.0	4.4
ADP0646	Myasi	5.0	5.0	5.0	4.8	5.0	5.0	5.0	4.7
ADP0647	Red Kanner	3.0	1.2	1.0	3.8	4.5	4.0	5.0	4.0
ADP0648	Red Kloud	5.0	1.6	1.7	4.0	4.8	5.0	5.0	4.0
ADP0649	Kamiakin	4.8	1.7	2.0	0.0	1.0	0.0	5.0	0.0
ADP0650	K-42	5.0	2.0	1.8	0.0	1.0	0.0	4.5	0.0
ADP0651	K-59	4.0	1.5	1.0	0.0	0.5	5.0	5.0	1.0
ADP0652	Lisa	5.0	4.8	5.0	0.3	1.2	5.0	5.0	1.5
ADP0653	USDK-CBB-15	0.0	0.2	0.5	0.0	0.0	3.3	5.0	0.0
ADP0654	USDK-4	3.5	0.5	1.0	0.3	0.0	5.0	5.0	1.5
ADP0655	Fiero	3.8	1.0	1.5	1.0	0.0	5.0	5.0	1.0
ADP0656	Royal Red	5.0	1.7	1.0	0.2	0.2	0.0	5.0	0.8
ADP0657	Kardinal	4.3	2.0	1.5	0.2	0.2	0.0	4.8	0.5
ADP0658	Blush	4.5	0.0	0.8	0.0	0.0	0.0	4.7	0.2
ADP0659	USLK-1	4.0	0.7	1.5	1.0	1.0	4.0	4.2	0.8
ADP0660	Krimson	1.0	0.3	1.0	1.3	0.8	3.7	4.8	0.0
ADP0661	USCR-7	5.0	3.0	3.3	1.2	1.7	0.3	5.0	5.0
ADP0662	USCR-9	5.0	2.0	1.7	4.3	5.0	5.0	5.0	5.0

ADP0663	USCR-CBB-20	1.2	1.7	1.0	0.0	0.0	3.3	5.0	0.5
ADP0664	Silver Cloud	5.0	2.0	1.0	0.5	0.5	1.0	4.7	2.0
ADP0665	USWK-CBB-17	4.0	0.5	1.0	3.6	4.5	4.0	5.0	5.0
ADP0666	USWK-6	4.7	1.0	1.5	0.3	0.7	3.8	5.0	0.4
ADP0667	VA-19	4.0	1.8	1.0	0.0	1.0	3.2	5.0	0.3
ADP0670	AC Calmont	3.8	1.0	1.4	0.2	0.0	3.4	5.0	1.0
ADP0672	CDRK	5.0	5.0	5.0	1.0	0.0	0.0	5.0	0.2
ADP0673	UC Nichols	5.0	1.5	1.7	0.2	1.0	5.0	5.0	0.0
ADP0674	UCD0704	2.0	1.0	1.0	0.4	1.0	1.0	3.7	0.5
ADP0675	UCD0801	5.0	2.0	2.0	3.5	5.0	5.0	5.0	5.0
ADP0676	CELRK	4.0	2.0	2.0	0.3	1.0	4.0	5.0	0.3
ADP0677	Etna	4.8	1.7	2.0	3.4	5.0	5.0	5.0	5.0
ADP0678	Hooter	4.2	2.0	1.5	0.0	0.0	1.0	3.3	0.2
ADP0679	Red Rover	4.2	1.2	1.7	0.0	0.0	5.0	5.0	0.3
ADP0680	Clouseau	4.3	2.0	3.5	0.0	1.0	4.0	4.8	0.0
ADP0683	IJR	4.8	5.0	5.0	2.7	5.0	4.3	5.0	5.0
ADP0684	Majesty	5.0	3.0	2.7	0.5	1.2	5.0	5.0	1.0
ADP0686	ADP0686	5.0	2.5	1.6	1.0	1.0	4.5	5.0	1.3
ADP0687	Pink Panther	4.5	2.2	2.0	1.0	1.2	4.0	5.0	1.2

Values = 0 are most resistant, while values = 5 are most susceptible. Cells in which an 'h' is listed is indication of a heterogeneous mixture.

Table S2. Results from screening 4 Mesoamerican lines from the Andean Diversity Panel against eight races of *Colletotrichum lindemuthianum*.

Variety		Anthracnose Race							
ID	Genotype	7	39	55	65	73	109	2047	3481
ADP0091	W6 16560	2.0	1.0	2.0	3.7	4.7	3.5	5.0	5.0
ADP0097	Bilfa 4	0.7	1.2	2.0	5.0	1.2	1.0	5.0	5.0
ADP0440	49-2	0.7	1.3	1.2	4.8	5.0	5.0	5.0	5.0
ADP0445	Chigar	3.2	1.2	1.3	5.0	5.0	5.0	5.0	5.0

Values = 0 are most resistant, while values = 5 are most susceptible.

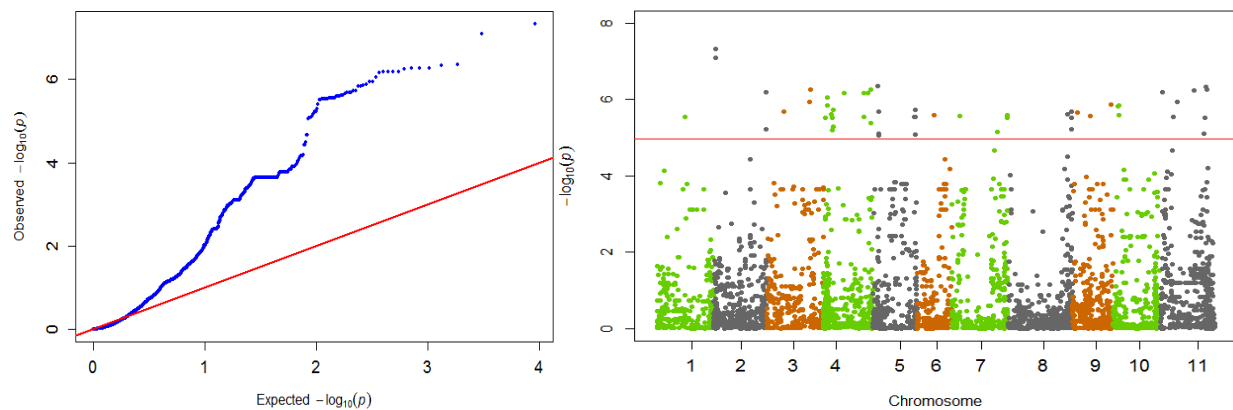


Figure S1. QQ Plot and Manhattan Plot showing candidate SNPs and their P-values from GWAS using MLM for race 2047 anthracnose resistance. Red line on Manhattan Plot is the significance threshold of $P=1.03 \times 10^{-5}$ after Bonferonni correction of $\alpha = 0.05$.